

HOW TO INTERPRET HRCT REPORT

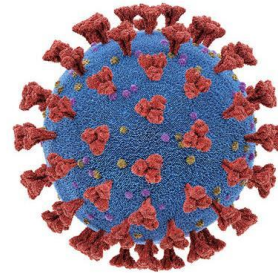
HRCT REPORT TEMPLATE

LOW DOSE H.R.C.T. CHEST SCREENING
(L.D.C.T.S.):

IMPRESSION:

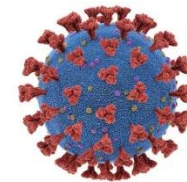
Findings are suggestive of atypical viral pneumonia, possibility of COVID-19 infection. **(CO-RADS V).**

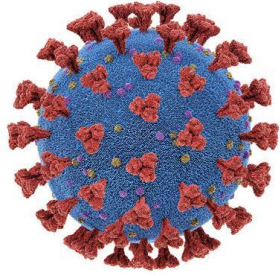
CT severity score 9 / 25 (Moderate)



WHAT IS CO-RADS ?

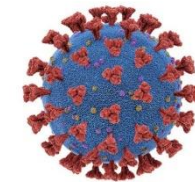
WHAT IS CT SEVERITY SCORE ?





What is CO-RADS???

- **CO-RADS** is a categorical assessment scheme used for reporting of chest CT patients, suspected of COVID-19.
- It represents the level of suspicion for pulmonary involvement.



For example, if CO-RADS is level 5 then there is very high surety for Typical COVID-19 findings.

CO-RADS

LEVEL OF SUSPICION FOR COVID-19 INFECTION

		CT Findings
CO-RADS 1	No	Normal or non-infections abnormalities
CO-RADS 2	Low	Abnormalities consistent with infections other than COVID-19
CO-RADS 3	Intermediate	Equivocal findings for COVID-19 infections
CO-RADS 4	High	Abnormalities suspicious for COVID-19 infection
CO-RADS 5	Very high	Typical COVID-19 findings
CO-RADS 6	PCR +	

HOW TO READ HRCT

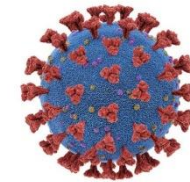
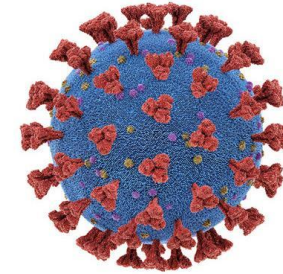
HRCT REPORT TEMPLATE

LOW DOSE H.R.C.T. CHEST SCREENING (L.D.C.T.S.):

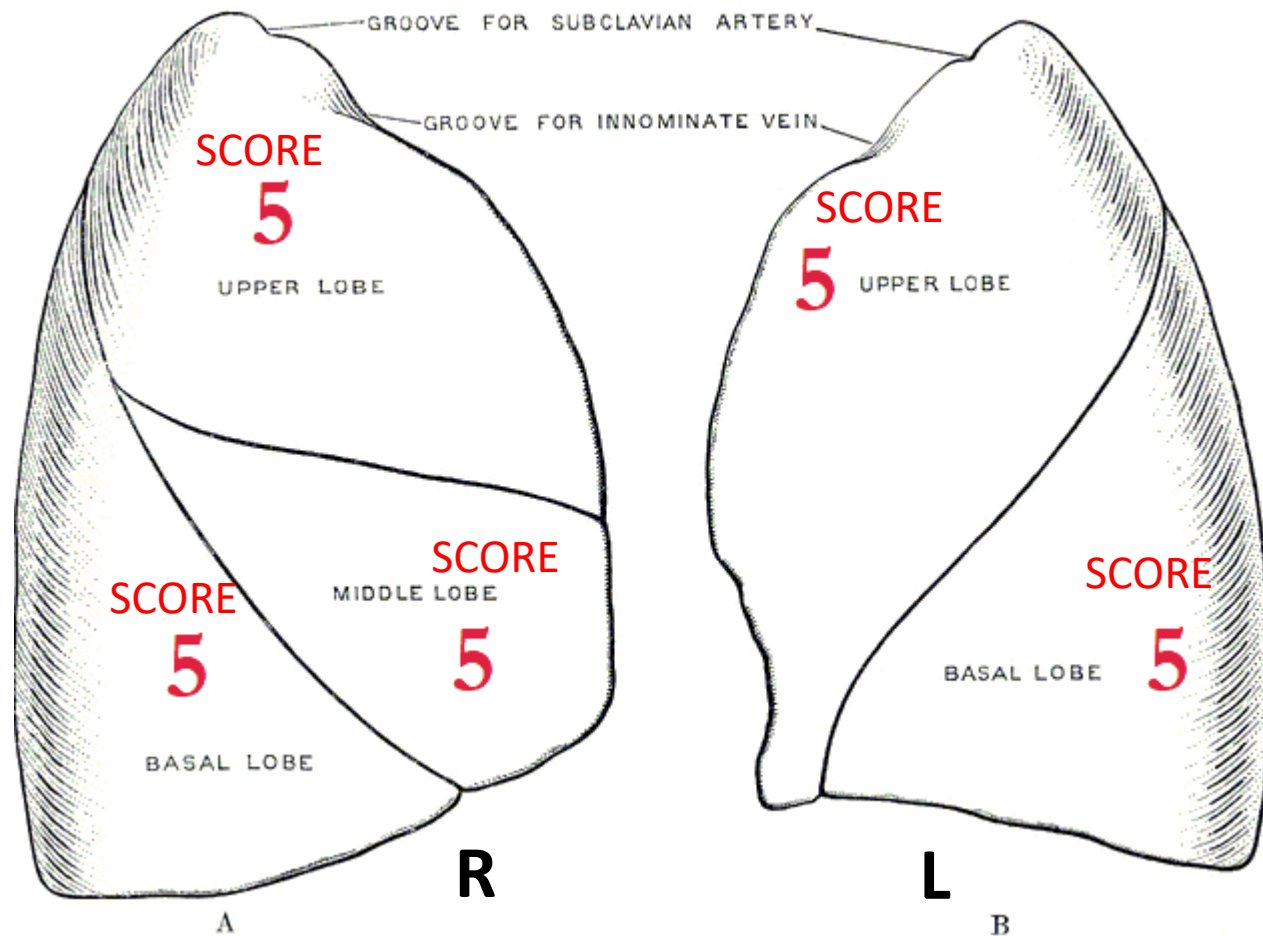
IMPRESSION:

Findings are suggestive of atypical viral pneumonia, possibility of COVID-19 infection. **(CO-RADS V).**

CT severity score 9 / 25 (Moderate)



CO-RADS 5 means there is very high suspicion of COVID-19 infection in this particular patient with typical COVID-19 findings.

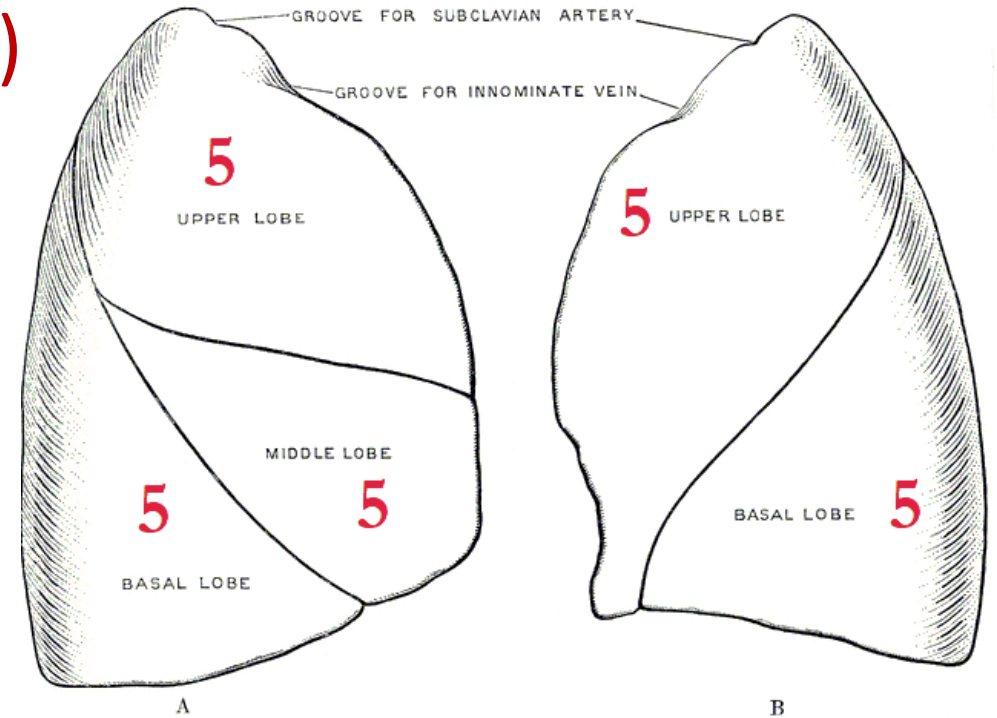


HRCT SEVERITY (TOTAL SCORE 25)

THERE ARE TWO LUNGS.
Right Lung and Left Lung
Right lung is divided in three lobes.
 UPPER LOBE, MIDDLE LOBE, LOWER LOBE
Left lung is divided in two lobes.
 UPPER LOBE AND LOWER LOBE
 EACH LOBE IS GIVEN SCORE 1 TO 5 BASED ON LUNG INVOLVEMENT.

INFECTION CRITERIA (SINGLE LOBE)

5 % INFECTED	: SCORE 1
5-25 % INFECTED	: SCORE 2
25-50 % INFECTED	: SCORE 3
50-75 % INFECTED	: SCORE 4
➤ 75 % INFECTED	: SCORE 5

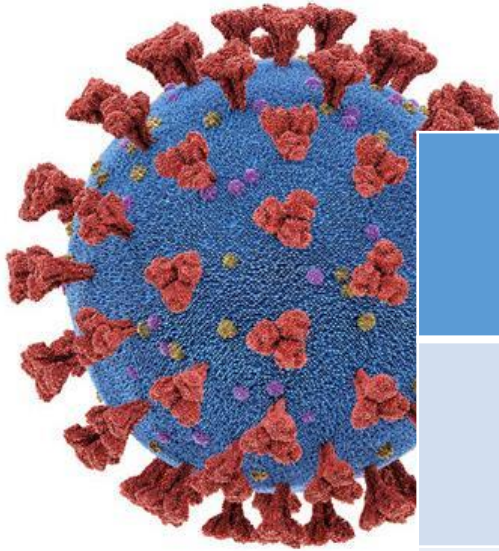


Score calculation is done based on each lobe involvement.

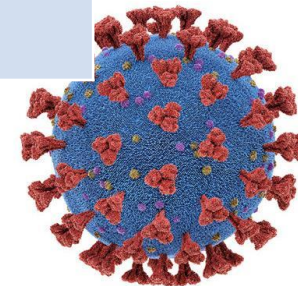
Each lobe has maximum score **5**.

And so 5 lobes has maximum score of **25**.

For example, score 5 means that lobe is > 75% involved or affected by COVID-19.



SCORE	CT SEVERITY
< 8	MILD
9 - 15	MODERATE
> 15	SEVERE



HOW TO READ HRCT REPORT

HRCT REPORT TEMPLATE

LOW DOSE H.R.C.T. CHEST SCREENING
(L.D.C.T.S.):

IMPRESSION:

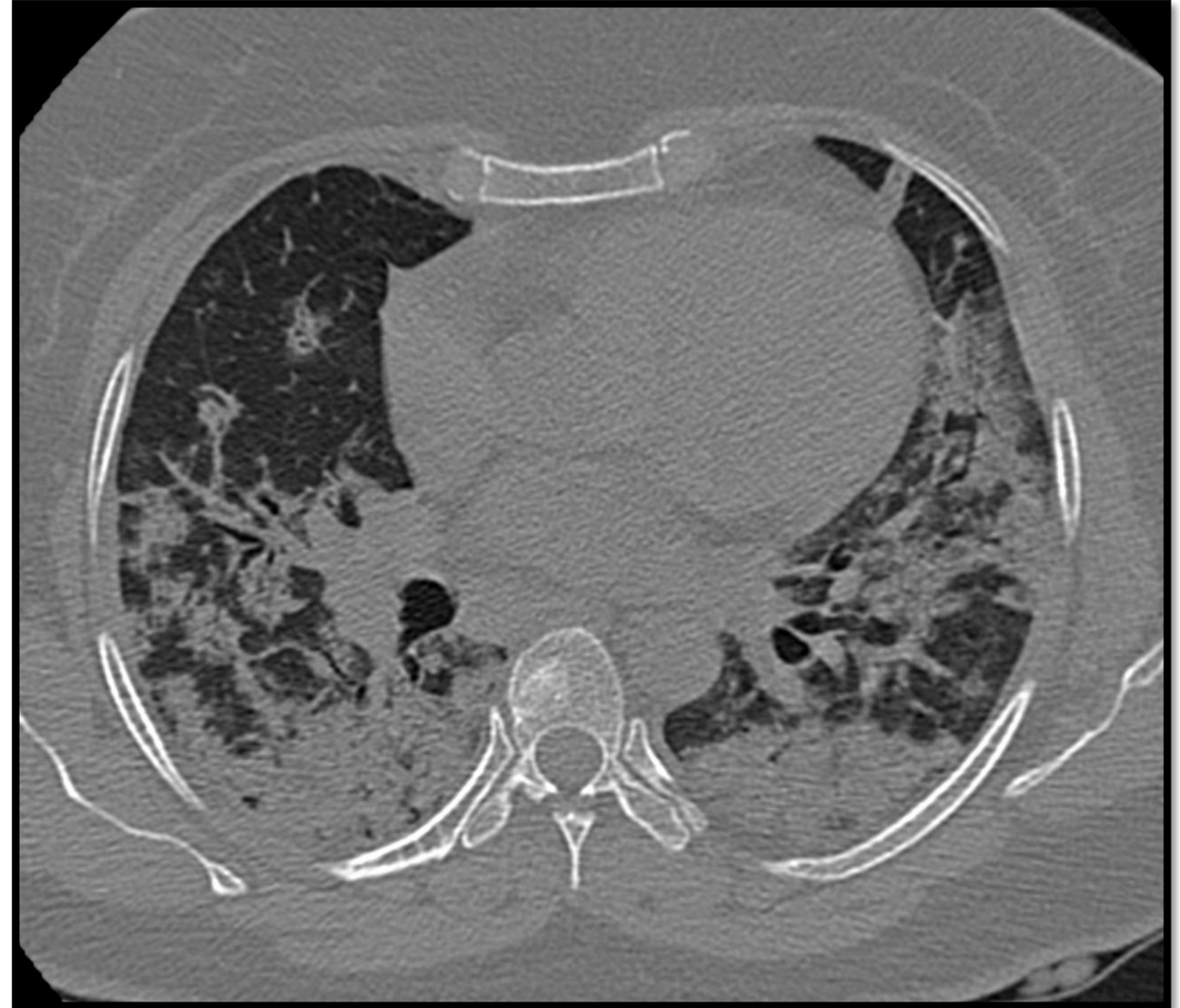
Findings are suggestive of atypical viral pneumonia, possibility of COVID-19 infection.
(CO-RADS V).

CT severity score 9 / 25 (Moderate)

CT Severity	%Involvement	Score
Right upper lobe	5 to 25%	2
Right middle lobe	5%	1
Right lower lobe	25%	2
Left upper lobe	5 to 25%	2
Left lower lobe	5 to 25%	2
	Total	9 /25

CT SEVERITY SCORE 9 OUT OF 25 means lungs are moderately infected with COVID-19 in this particular patient.

SOME IMAGES OF HRCT COVID-19 STUDIED AT X-RAY HOUSE



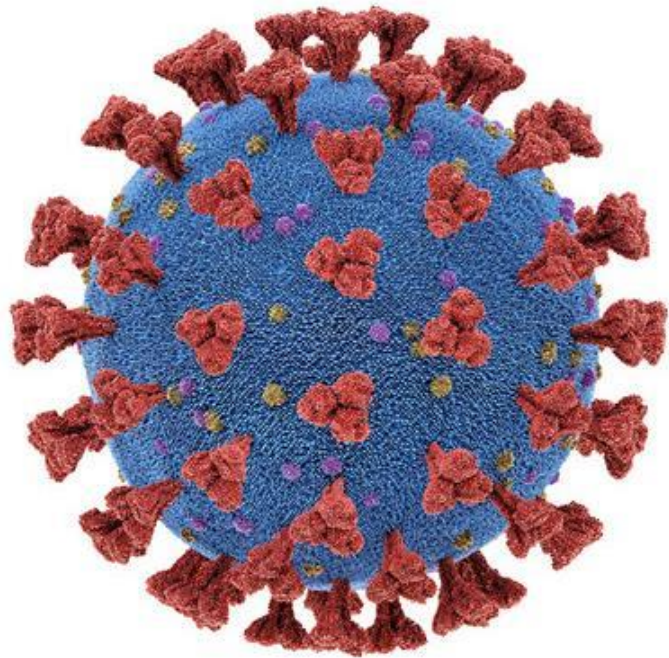
WE ARE TAKING CARE FOR YOU FOR YOUR PATIENTS...

We Have Designated Two CT Scan Machines,

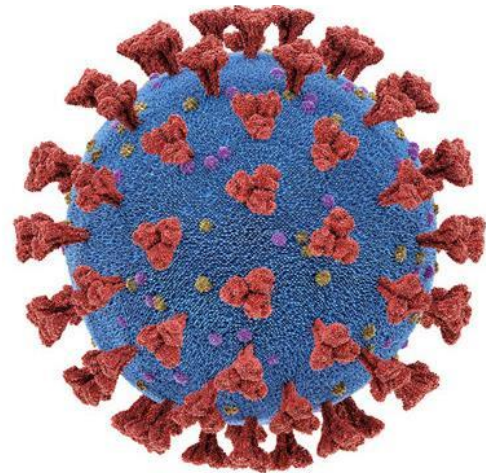
1. For COVID-19 Suspected Patients &
2. For Non-COVID Patients.

A Separate X-Ray Machine Has Been Arranged For Suspected COVID-19 Patients X-Ray Study ...

ALL NECESSARY PRECAUTIONS HAVE BEEN TAKEN TO PREVENT CROSS-INFECTION OF COVID-19 TO OTHER PATIENTS & TO STOP VIRUS SPREAD TO SOCIETY...



**“TOGETHER
WE CAN FIGHT
COVID-19”**



THANK YOU